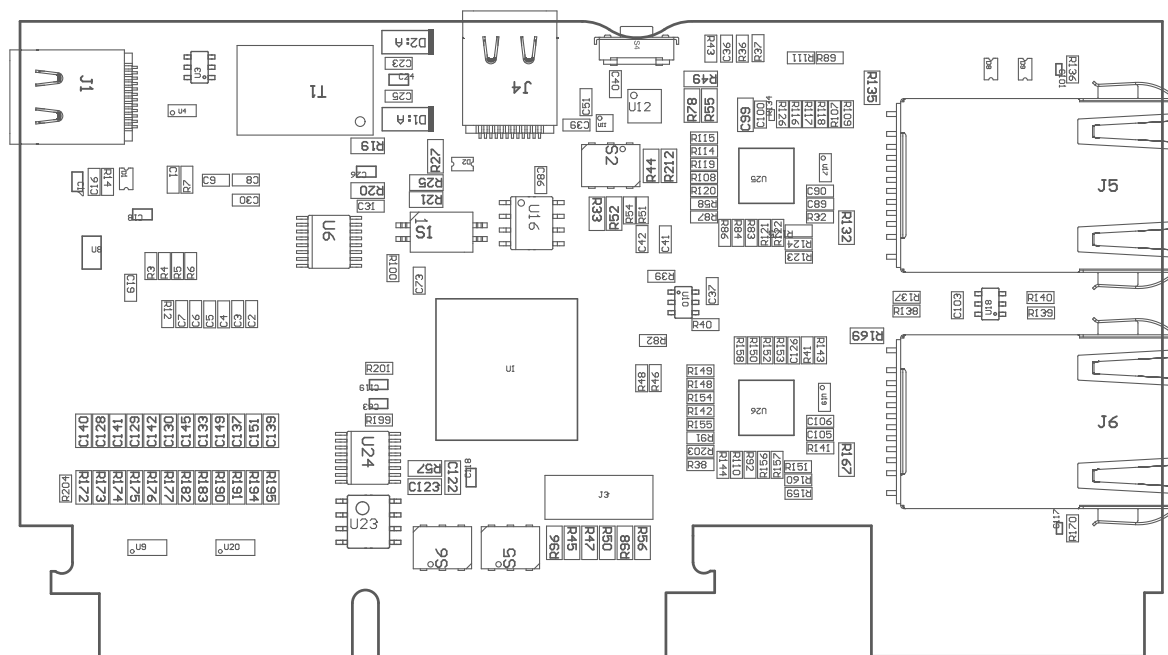
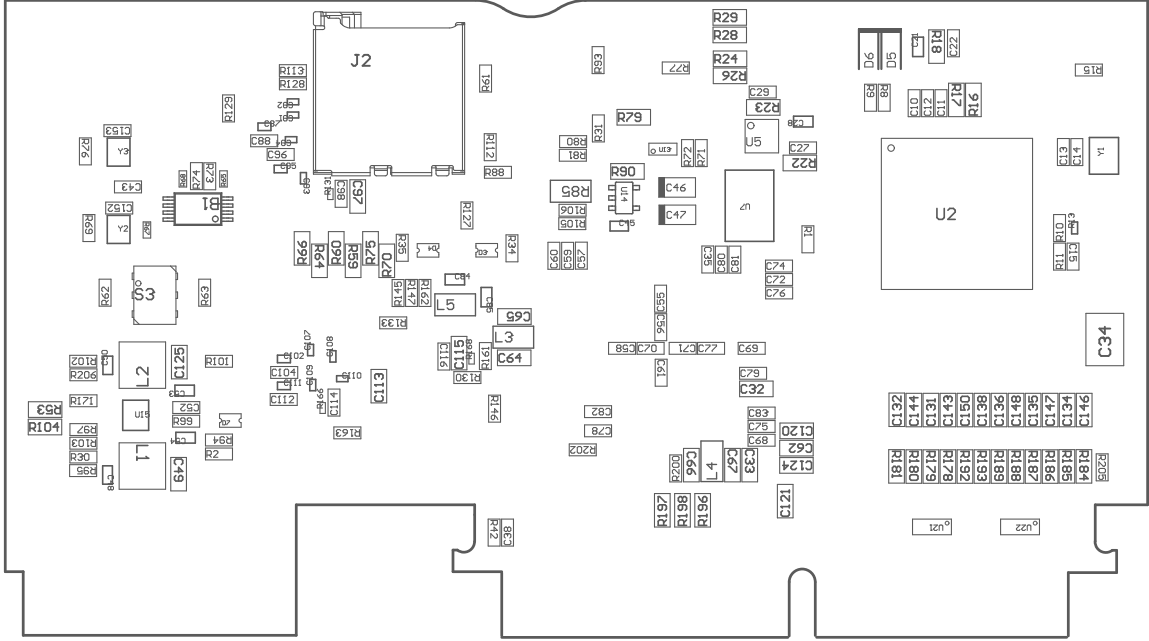


Z24 ■ These assemblies must comply with workmanship standards IPC-A-610 Class 2, unless otherwise specified.



ASSEMBLY VARIANT: [No Variations]

PCB VIEWED FROM TOP SIDE	BOARD #: MCU114	REV: B	SUN REV:
	TID #: N/A		
PLOT NAME = Top Assembly Drawing	GENERATED : 2/27/2024 3:49:08 PM		TEXAS INSTRUMENTS



COMPONENTS MARKED 'DNP' SHOULD NOT BE POPULATED.  
ASSEMBLY VARIANT: [No Variations]

	BOARD #:	MCU114	REV:	B	SUN REV:
	TID #:	N/A			
PLOT NAME =	Bottom Assembly Drawing	GENERATED	:	2/27/2024 3:49:09 PM	TEXAS INSTRUMENTS